

Authentic Clinical Leadership- why it matters.

Dr Alex Markwell

Senior Staff Specialist, Emergency and Trauma Centre RBWH

Immediate Past Chair, Queensland Clinical Senate



Acknowledgement of Country

I respectfully acknowledge the Traditional Owners of the many lands on which we are meeting today, and pay my respects to Elders past, present and emerging.

OUR PLACE OF HEALING

BY ELAINE CHAMBERS-HEGARTY

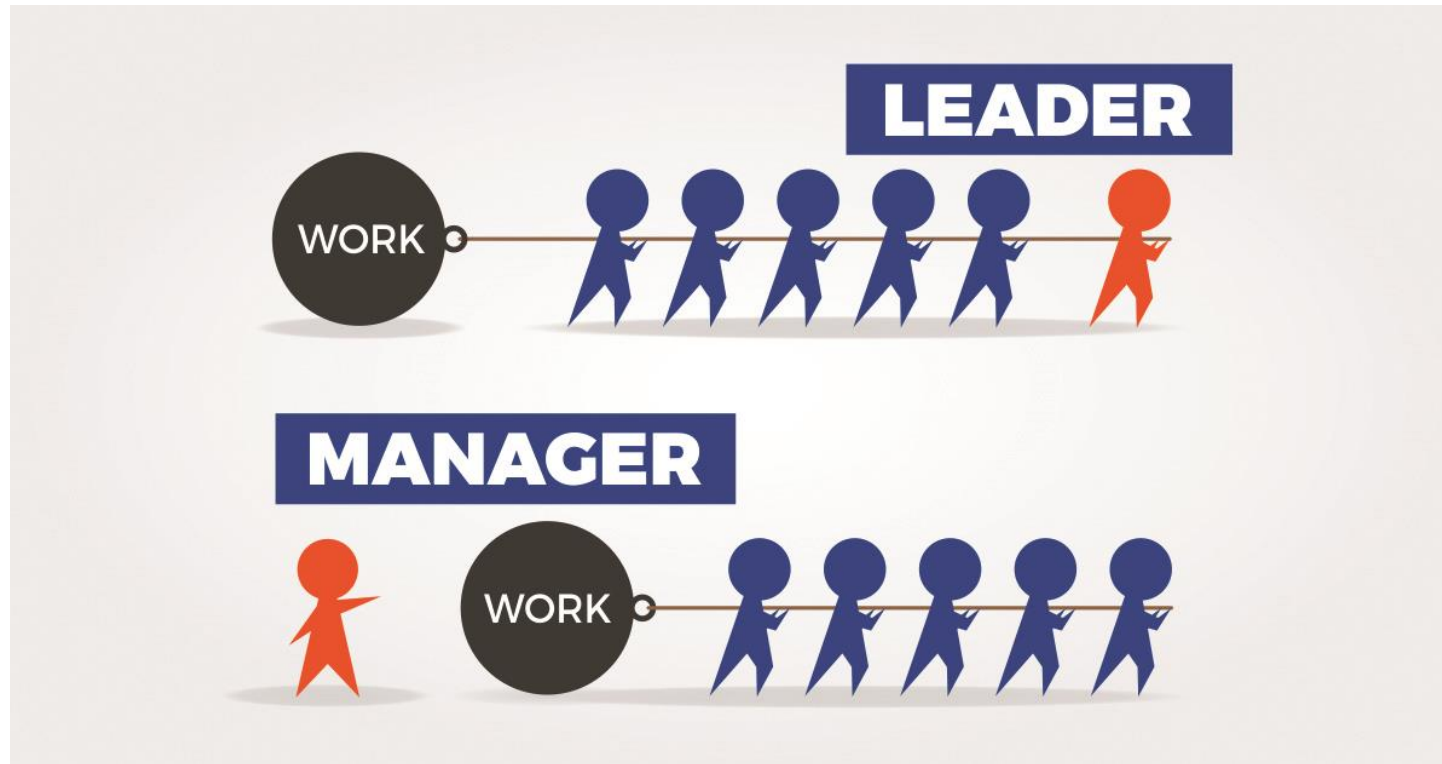




Clinician Leadership



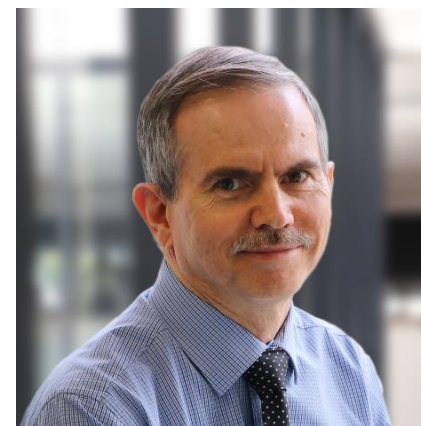
Leadership



Queensland Clinical Senate Executive



Queensland Clinician Leaders



Leadership training



[APPLY / LOG-IN](#) [PROGRAM FINDER](#) [BLOG](#) [SUBSCRIBE](#) [HEALTH & SAFETY](#) [FAQS](#)

EXECUTIVE EDUCATION [Programs for Individuals](#) [Programs for Organizations](#) [HBS Experience](#) [Faculty](#) [Admissions](#) [Participant Stories](#)

[...](#) [Programs for Individuals](#) [Comprehensive Leadership Programs](#) [Program for Leadership Development](#) [Overview](#)

Program for Leadership Development: Accelerating the Careers of High-Potential Leaders



Upcoming Sessions [← \(1 OF 2\) →](#)

Status: Waitlisted

Dates: 29 NOV 2022–30 JUN 2023

Format: Blended [Ⓜ]

Locations: Virtual, HBS Campus

Fee: \$52,000

The program fee covers tuition, books, case materials, accommodations, and most meals.

Modules:

29 NOV 2022–04 MAR 2023 — Module 1 (Virtual, Self-Paced)

05–17 MAR 2023 — Module 2 (HBS Campus)

18 MAR–17 JUN 2023 — Module 3 (Virtual, Self-Paced)

18–30 JUN 2023 — Module 4 (HBS Campus)

[Apply](#)

[Download Brochure](#)

[Admissions Criteria and Process](#)

Leadership training

16 PERSONALITIES



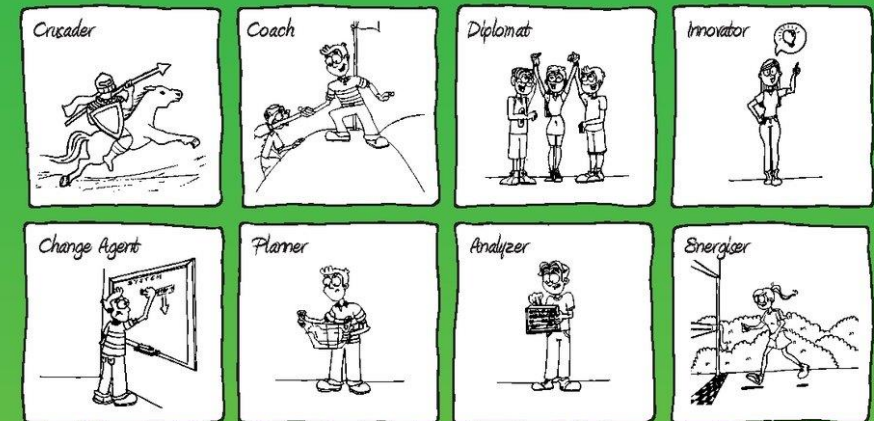
<https://www.myersbriggs.org/my-mbti-personality-type/mbti-basics/>

Credit: Mininyx Doodle/Shutterstock

<https://www.discovermagazine.com/mind/the-problem-with-the-myers-briggs-personality-test>

LEADERSHIP STYLE FINDER

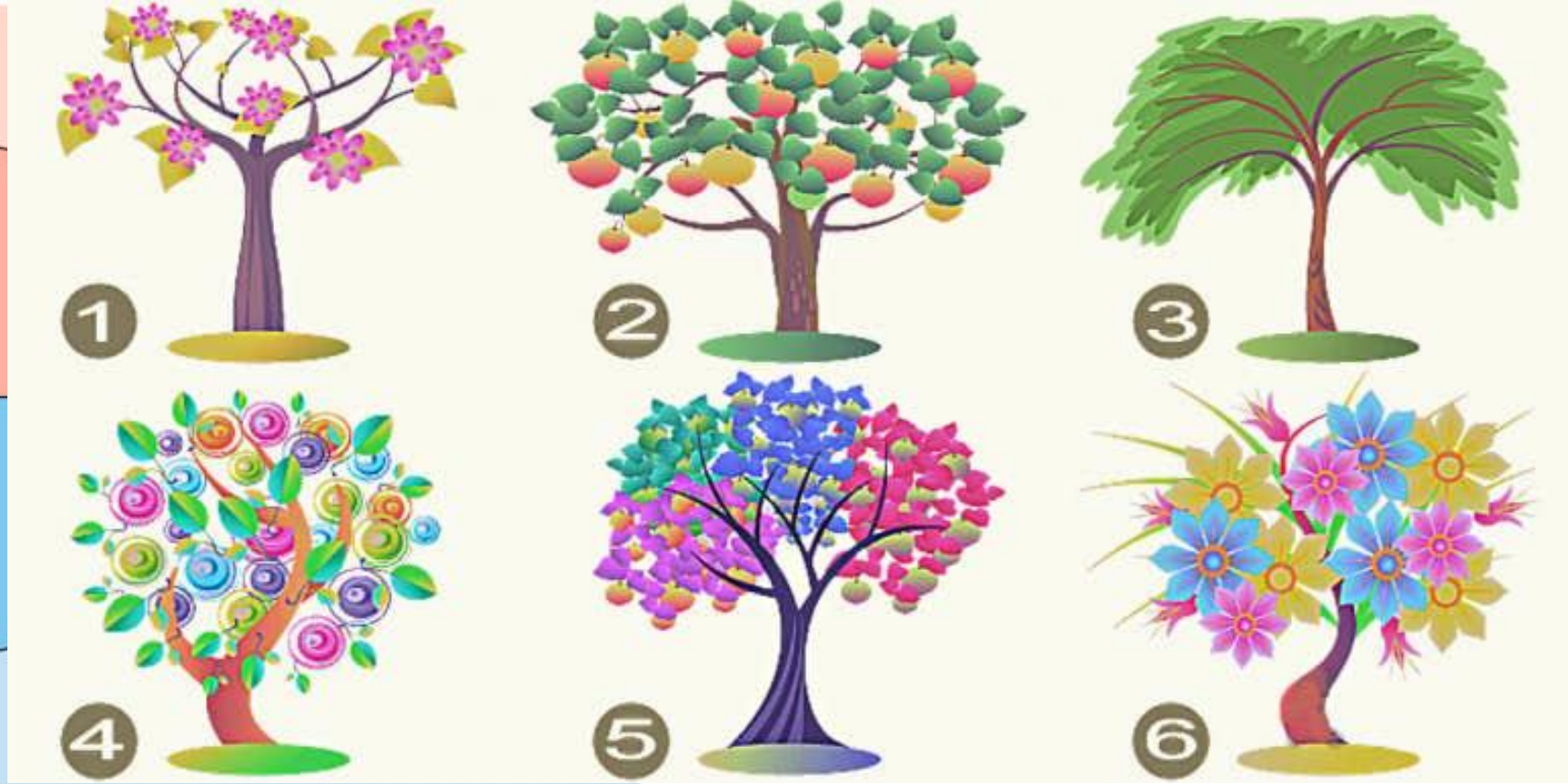
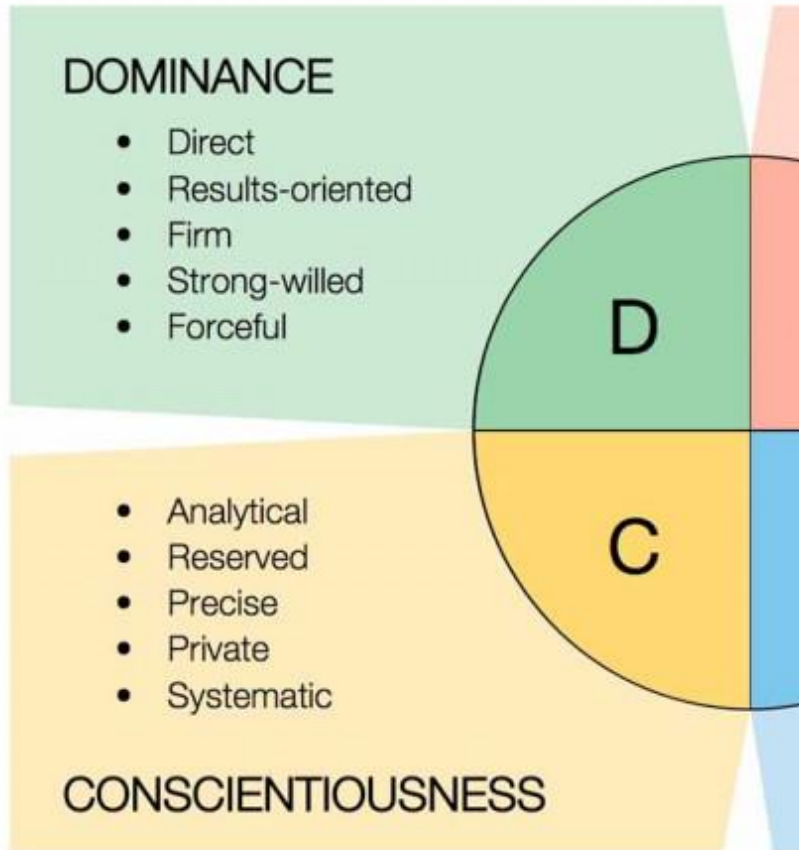
HOW YOUR PERSONALITY DEFINES
YOUR LEADERSHIP STYLE



PETER BUROW

<http://www.neuropowergroup.com/neuropower-books>

Leadership Training



<https://www.discprofile.com/>

<https://www.yourtango.com/self/tree-visual-personality-test-dominant-personality-test>

Self-awareness



Authentic leadership

- being real or true
- style that focuses on transparent and ethical leader behaviour and encourages open sharing of information needed to make decisions while accepting followers' inputs
- about being you **AND** making room for others
- Leaders who are honest, brave and willing to climb into the trenches



Authentic leadership

- Self-awareness- strengths, weakness, limitations; emotional intelligence
- Great listening skills
- Emotional control- honest feedback
- Relationship-driven (at least as much as results)
- Accountability- take responsibility when things go wrong
- Empathy- seek to understand why
- Humility
- Long term goals
- Internal code of ethics/integrity



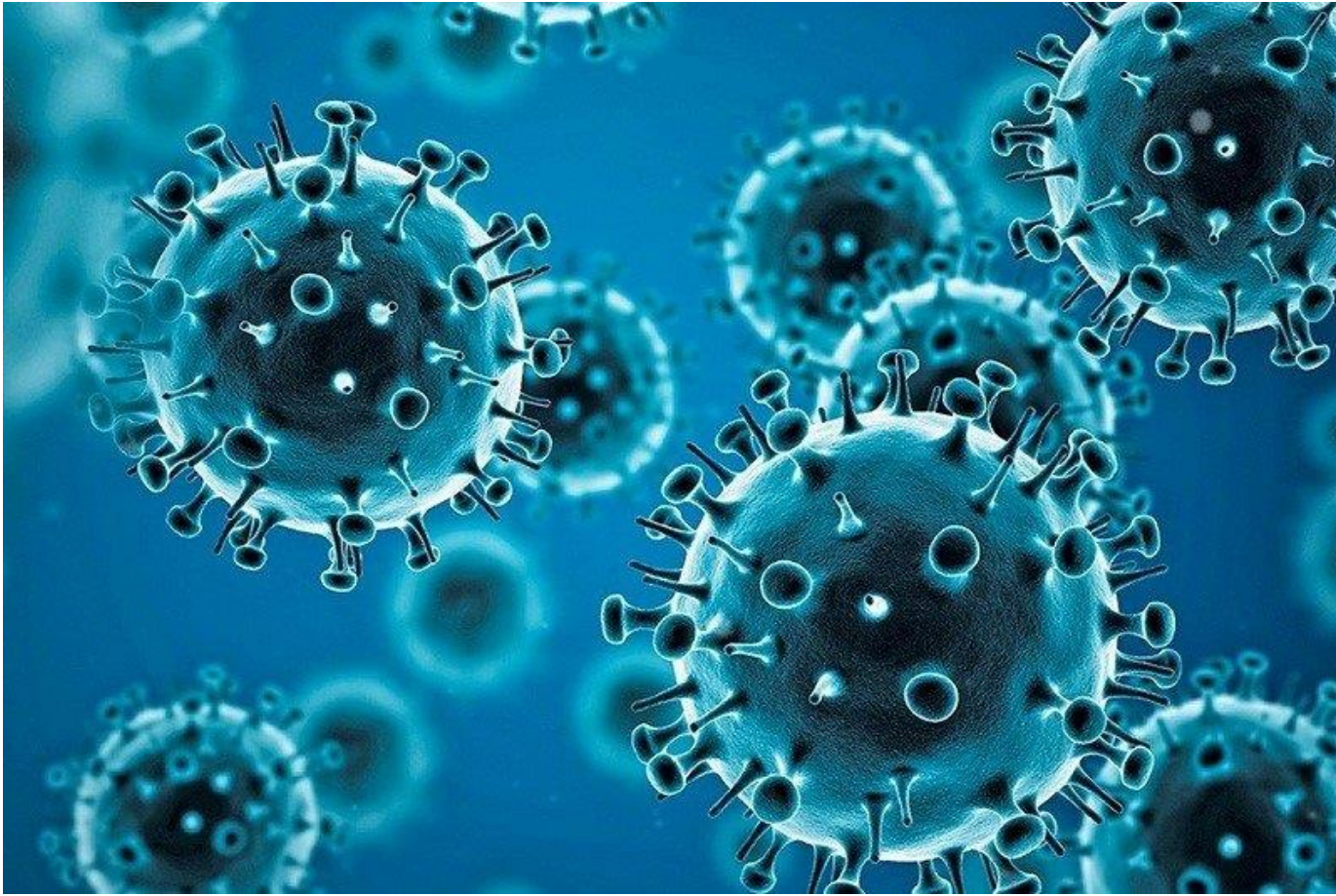
“Good” leaders

- Sincere enthusiasm
- Integrity
- Great communication skills
- Loyalty
- Decisiveness
- Competence
- Empowerment
- Charisma (well-spoken, approachable, friendly, sincere care for others)



Why does this matter?





NATIONAL
CLINICAL
EVIDENCE
TASKFORCE

COVID-19



Queensland update, Adelaide to be declared a COVID-19 hotspot, COVID-19 vaccination policy, National Contact Tracing Review

Current COVID-19 situation in Queensland

- **0 new cases** overnight
- **8 active cases** in QLD
- **1,185 total cases**
- **1,633** COVID-19 tests conducted in the last 24 hours
- To date, there have been **6 deaths** in Queensland.

[More Queensland data](#)

[National data](#)

NEW – Adelaide to be declared a COVID-19 hotspot

A rapidly growing COVID-19 cluster in the north of Adelaide has seen several states announce new

Public Health Emergency Powers end; Mask-wearing in hospitals; New Infection Prevention and Control Manual; WHO Update on variants; Become an authorised voluntary assisted dying practitioner; Supply Advisories; CKN Update; Vote for the QCS podcast

Current COVID-19 situation in Queensland

[Queensland Case data](#)

COVID-19

As of 25 October*

- **4,447** new reported COVID-19 cases
- **1,664,371** total reported COVID-19 cases (since Jan 2020)
- **105** in hospital with COVID-19, **2** in ICU (public and private hospitals)
- **18** deaths with a recent COVID-19 diagnosis were reported
- **2,274** total deaths with a recent COVID-19 diagnosis.





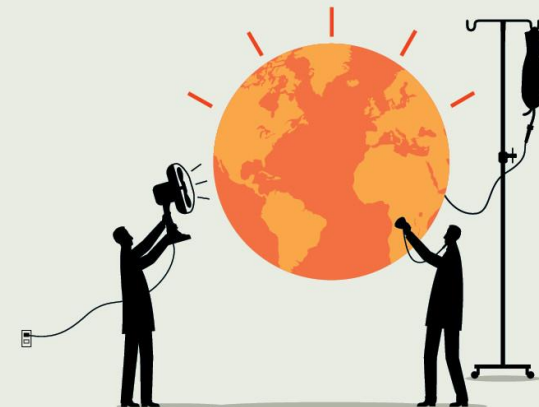


PUBLIC HOSPITAL



EMERGENCY

www.ama.com.au



https://www.publichealth.columbia.edu/sites/default/files/styles/hero_1500x632/public/jpg/climatecrisis081921-1500x632.jpg?itok=Ixi-q38m

Resources

- The Medical Care Blog- [Authentic leadership in healthcare and public health](#)
- BetterUp- [Authentic leadership blog](#)
- Harvard Business Review- [Discovering your Authentic Leadership](#)